



# APACHE DIRECTORY STUDIO

Pierre-Arnaud Marcelot — IKTEK



ABOUT ME

# ABOUT ME

- Software Engineer at IKTEK, a french Open Source and Identity Management company
- Committer/Member at the Apache Software Foundation
- Current Apache Directory project Chairman



# AGENDA

# AGENDA

- The State of Apache Directory Studio
- Presentation of Apache Directory Studio 2.0
- Questions



# THE STATE OF APACHE DIRECTORY STUDIO

WHAT IS APACHE  
DIRECTORY STUDIO?



# WHAT IS APACHE DIRECTORY STUDIO?

- An LDAP client platform based on Eclipse, extending it with several plugins and also extensible by third parties developers.
- Can be installed into a standard Eclipse distribution.
- Can also run as a standalone multi-platform application (Mac OS X, Linux and Windows).
- Free, Open Source (developed at the Apache Software Foundation) and distributed under the Apache License 2.0.



# 5 MAJOR FEATURES

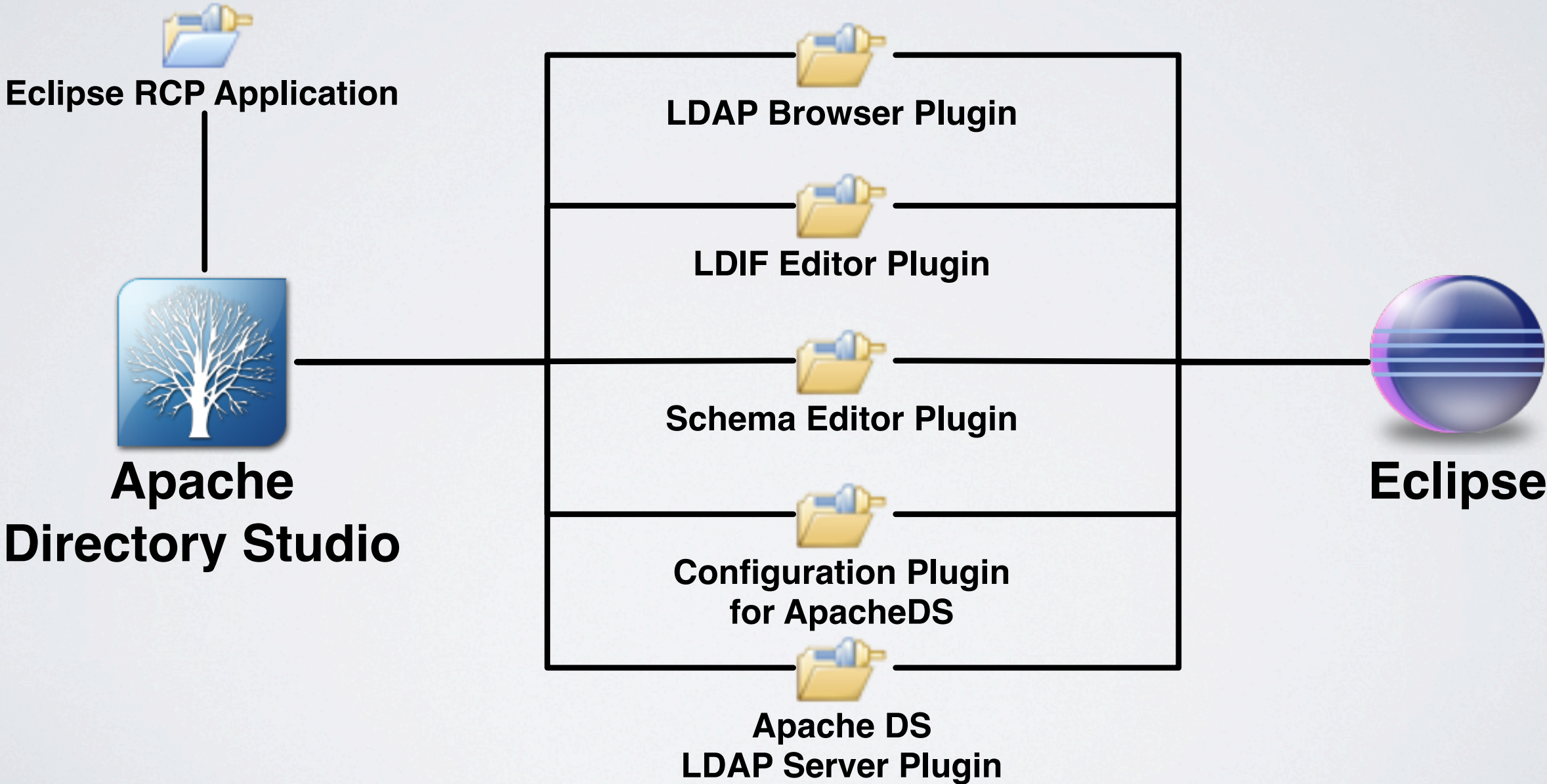
# 5 MAJOR FEATURES

- An LDAP Browser
- An LDIF Editor
- A Schema Editor
- A Configuration Editor for ApacheDS
- An integrated ApacheDS LDAP Server utility



ARCHITECTURE

# ARCHITECTURE





HISTORY & FUTURE

# HISTORY & FUTURE

- Version 1.0 released at first LDAPCon, Sept. 2007 in Köln.
- 5 major improvements releases since then.
- Latest stable version is 1.5.3, released in April 2010.
  - More than 250,000 downloads (standalone application only).
  - On a 150,000 downloads/year curve (standalone application only).
- Work on the 2.0 version started more than a year ago.



# PRESENTATION OF APACHE DIRECTORY STUDIO 2.0





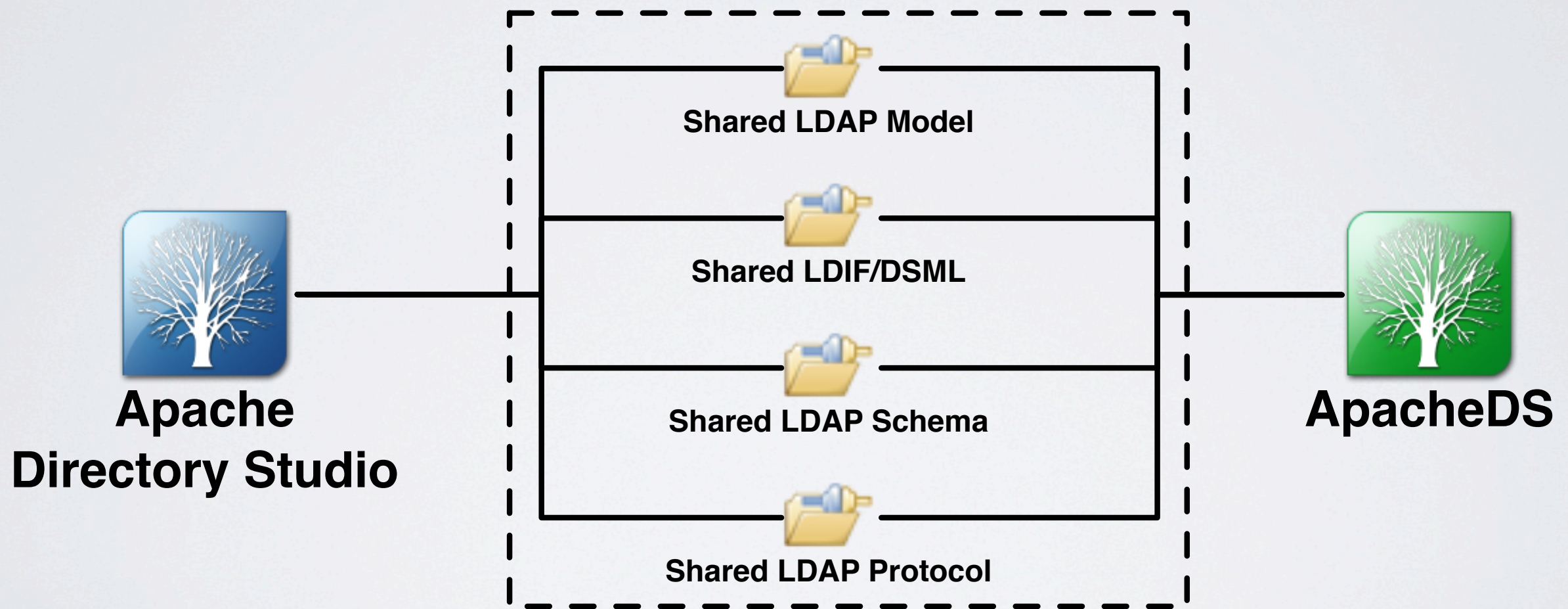
# A COMMON CODE-BASE ACROSS PROJECTS

# A COMMON CODE-BASE ACROSS PROJECTS

- Work on ApacheDS 2.0 started at the same time.
- Leveraging a same code base for commonly used LDAP concepts like attributes, entries, etc.
- Few changes in the UI but major modifications in the inside.



# A COMMON CODE-BASE ACROSS PROJECTS



# THE APACHE DIRECTORY LDAP API



# THE APACHE DIRECTORY LDAP API

- Initially co-presented at LDAPCon 2009 by OpenDS from Sun Microsystems and the Apache Directory teams.
- An API based on the LDAP Protocol.
- Easy to use and versatile.
- Support for simple and complex connections, entries, attributes and values manipulation, utilities for LDIF files.

# THE APACHE DIRECTORY LDAP API

```
// Creating the LDAP connection
LdapConnection connection = new LdapNetworkConnection( "localhost", 10389 );

// Binding
connection.bind( "uid=admin,ou=system", "secret" );

// Searching for entries
EntryCursor results = connection.search( new Dn( "ou=system" ),
    "(objectClass=*)", SearchScope.SUBTREE, "*" );

// Iterating on the results
while ( results.next() )
{
    // Getting the next entry
    Entry entry = results.get();

    // Iterating on the entry's attributes
    for ( Attribute attribute : entry )
    {
        // Iterating on the attribute's values
        for ( Value<?> value : attribute )
        {
            // TODO: Do something with the value
        }
    }
}
}
```

```
// Adding an entry
Entry entry = new DefaultEntry( "ou=group, ou=system" );
entry.add( "objectClass", "top", "organizationalUnit" );
entry.add( "ou", "group" );
connection.add( entry );

// Deleting an entry
connection.delete( "ou=group, ou=system" );

// Closing the LDAP connection
connection.close();

/* ----- */

// Reading a LDIF file
LdifReader ldifReader = new LdifReader( "/Users/pajbam/Desktop/file.ldif" );

// Iterating on the entries in the LDIF file
while ( ldifReader.hasNext() )
{
    // Getting the next entry
    LdifEntry ldifEntry = ldifReader.next();
}

// Closing the LDIF reader
ldifReader.close();
```



# THE APACHE DIRECTORY LDAP API

**New LDAP Connection**

**Network Parameter**  
Please enter connection name and network parameters.

Connection name: ApacheDS 2.0

Network Parameter

Hostname: localhost

Port: 10389

Encryption method: No encryption

Provider: JNDI (Java Naming and Directory Interface)  
✓ Apache Directory LDAP Client API

Check Network Parameter

? < Back Next > Cancel Finish

# CONFIGURATION PLUGIN FOR APACHEDS 2.0



# APACHEDS 2.0

- New in DIT and LDIF-based configuration (no more XML & Spring).
- Rewritten Schema Manager.
- Improved replication following RFC 4533 (same as OpenLDAP):
  - Master-Slave
  - Multi-Master
- OSGI compliant.

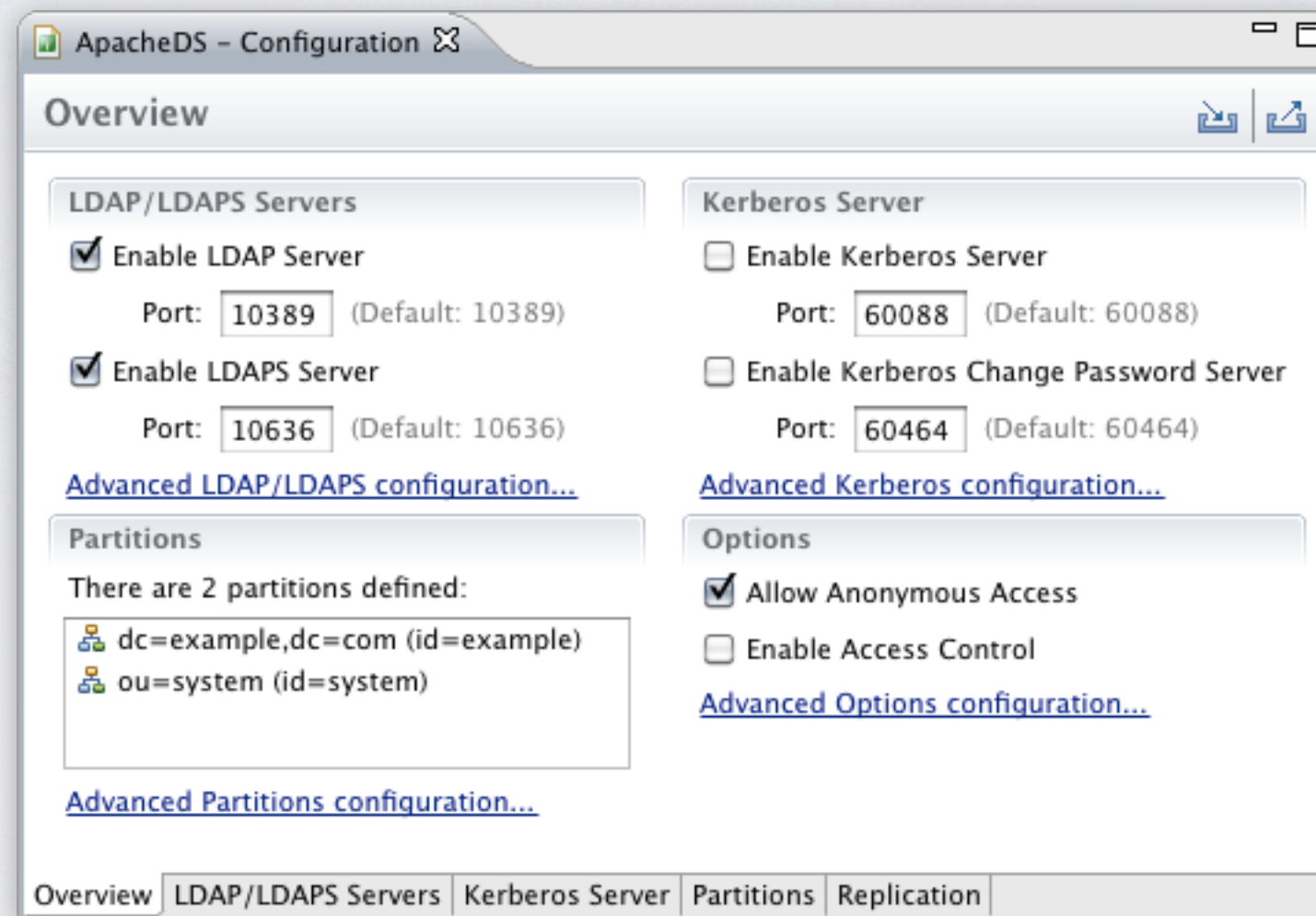


# CONFIGURATION PLUGIN FOR APACHEDS 2.0

- Reads the configuration of an ApacheDS 2.0 server live, over a connection in the LDAP Browser and/or via its LDIF file on the disk.
- The graphical editor allows you to edit basic settings, as well as partitions and indexes configurations.



# CONFIGURATION PLUGIN FOR APACHEDS 2.0



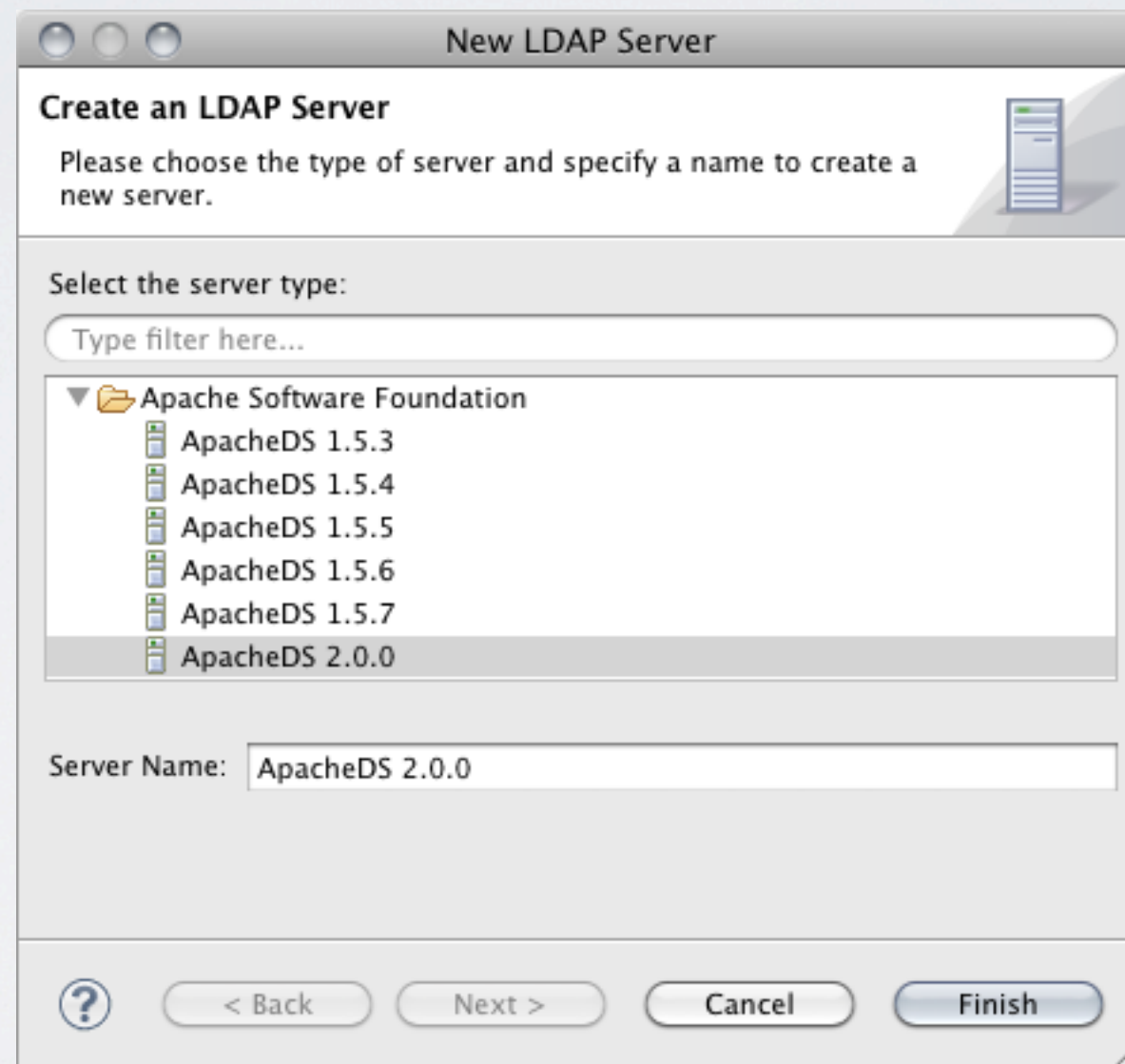
# NEW EXTENSIBLE LDAP SERVERS PLUGIN



# NEW EXTENSIBLE LDAP SERVERS PLUGIN

- Inspired from the ApacheDS LDAP Server plugin.
- Makes it easy to create, start and stop a new LDAP Server.
- Perfect for running an LDAP Server in the “development” phase of a project.
- Its extension point allows the addition of new LDAP Servers Adapters.

# NEW EXTENSIBLE LDAP SERVERS PLUGIN





DEMONSTRATION

THANK YOU!



# QUESTIONS?

(AND ANSWERS...)