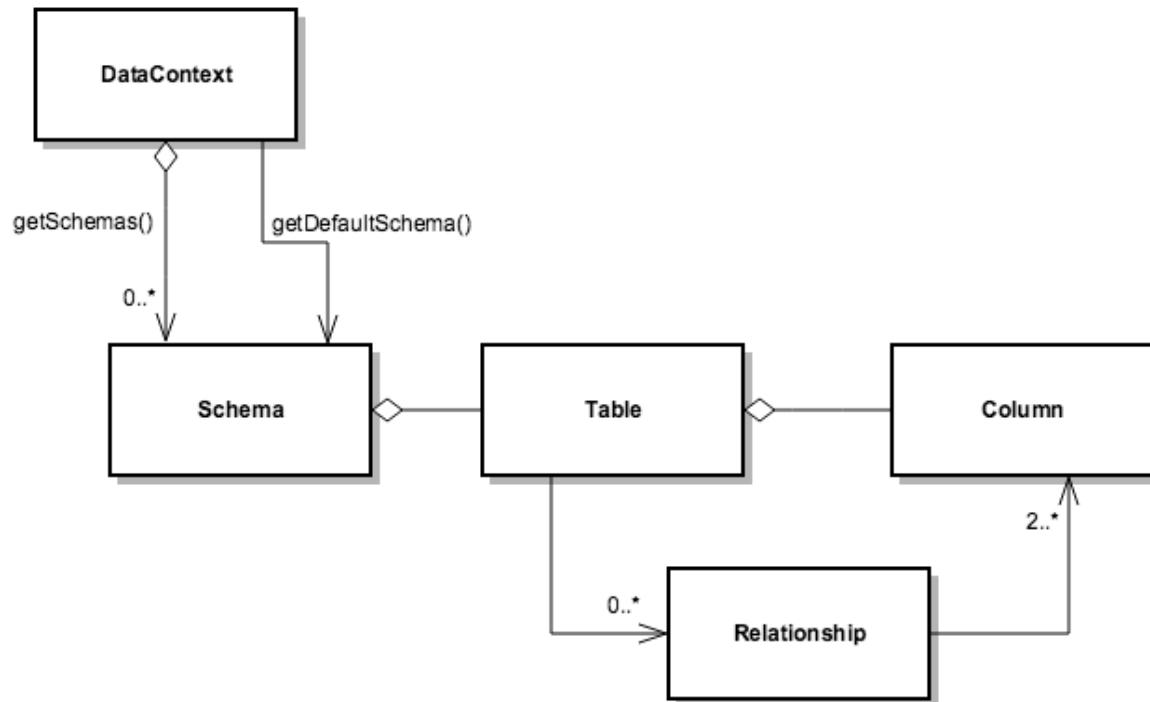


Schema model

Apache MetaModel is built with a tabular schema model in mind, trying to unify different datastores into a simple SQL-friendly table-based model.

Although tabular, MetaModel does support complex data types such as (key/value) Maps and Lists.

The following diagram depicts the schema model of Apache MetaModel and it's relationship with [DataContext](#).



See also

- [DataContext](#) - the object holding the schema.
- [Schema and table semantics](#) - for more information about the specific implementations and mappings of schema and table to native concepts.
- [Query object, the Query-builder API and Query parsing](#) - for information about how queries utilize the schema model